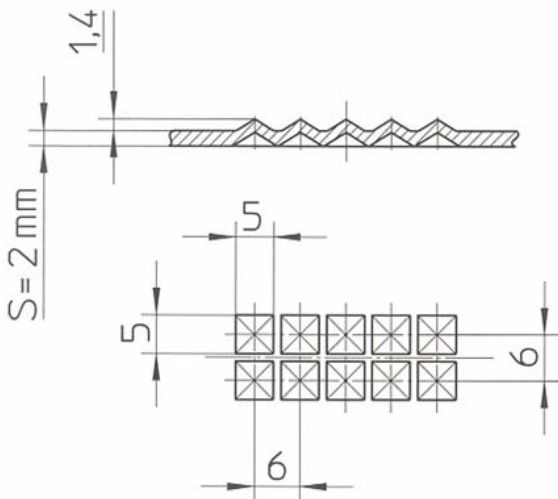
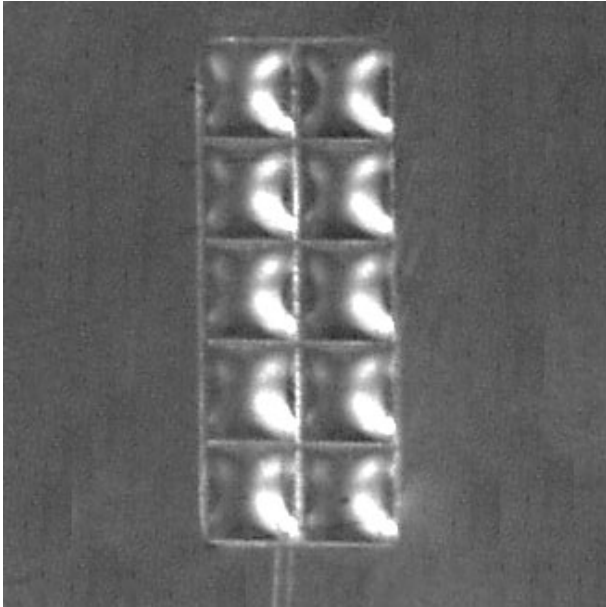


10-Station Cluster Tool

System

THICK TURRET

Technical Information



Data:

This tool was produced for machine type

AMADA (600KN)

Sheet thickness $s = 2,0 \text{ mm}$

Sheet material Stainless Steel

General

10 pyramides are punched in ONE hit.

Date: 03.03.2009

Yours PASS Stanztechnik AG

This information is the property of PASS Stanztechnik AG and must not be copied or otherwise given to other persons without written consent.