

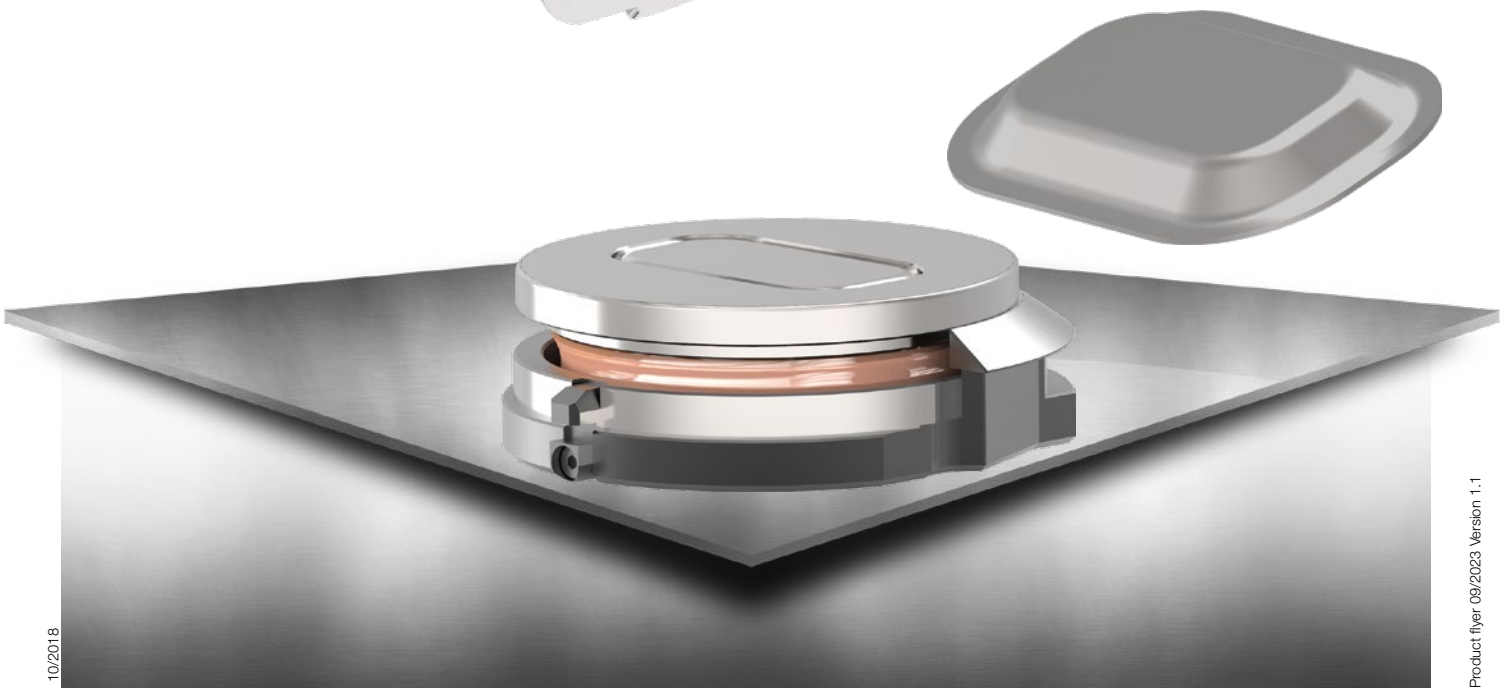
ps:[®]emboss5

FOR MACHINE TYPE TRUMPF

- special tools with max. size as spring-loaded lower part (Ø 98,5 mm)
- special assembly for reducing sheet warpage for large embossings
- extended upper part with enlarged surface
- active die necessary



e.g. dimensions of 45 x 75 mm



TRUMPF

THICK TURRET

SALVAGNINI