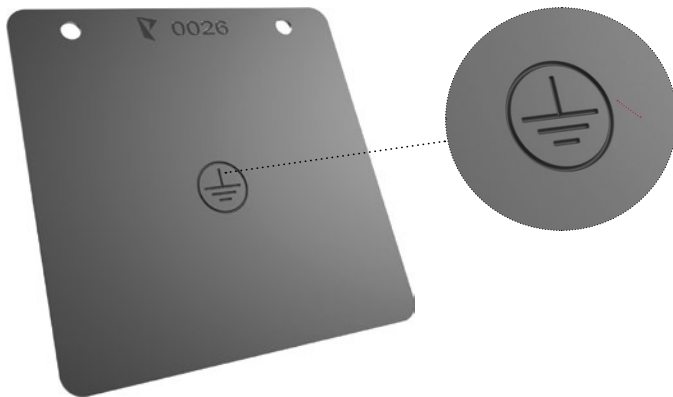


EMBOSSINGS AND MARKINGS

FOR MACHINE TYPES TRUMPF, THICK TURRET & SALVAGNINI

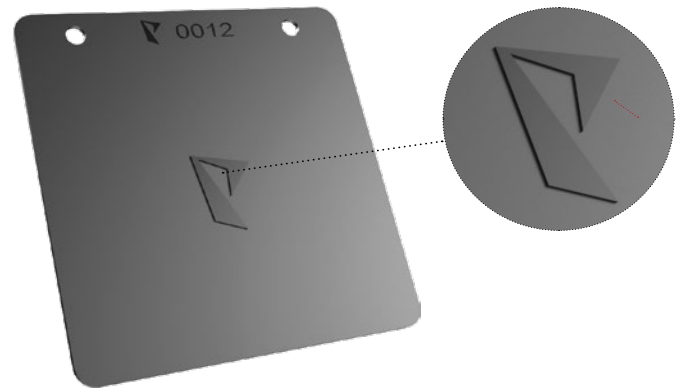
Marking tool:

- markings possible from below and above with a depth of up to approx. 0,5 mm
- fine, recessed lines possible
- markings in one hit
- effective and fast production
- application area: attachment of logos to finished products, ground symbols, protective conductor signs



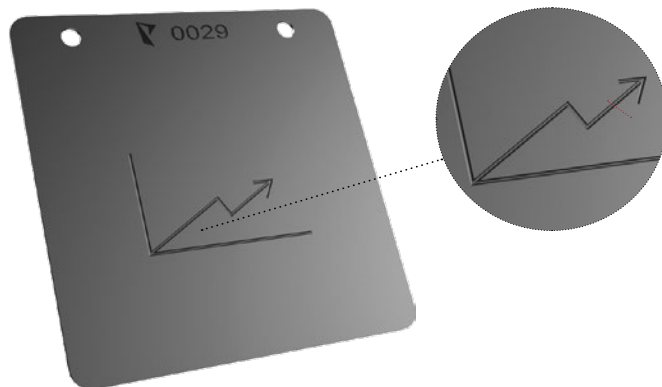
Embossing tool:

- raised embossing in one hit
- optically high quality
- application area: optical and visible sheets with logos, symbols, shapes or characters



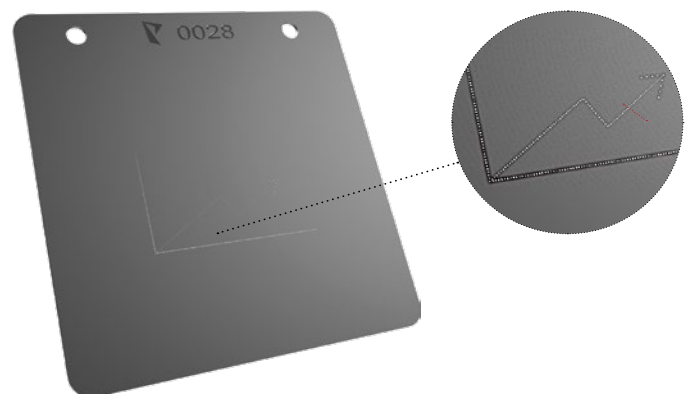
Engraving tool:

- engravings with a depth of approx. 0,15 mm
- numbers, letters, special characters, free shapes
- flexible usable



Signing tool:

- signing of parts from individual, composite grain points
- application area: numbers, letters, special characters, free shapes



TRUMPF

THICK TURRET

SALVAGNINI