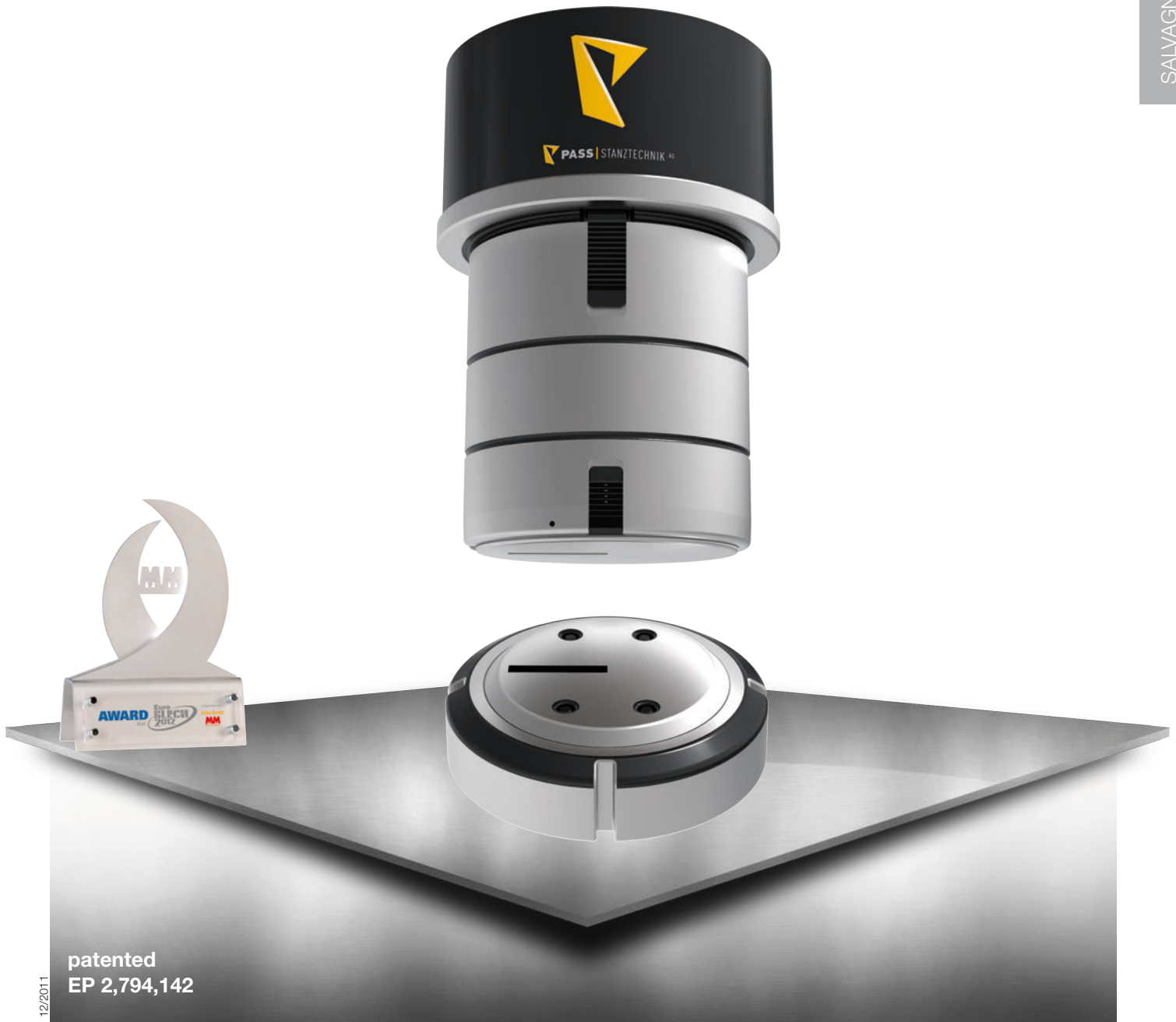


ps:® clean-cut

FOR MACHINE TYPE THICK TURRET - STATION D

- shavings will be guided through the die and will be separated into pieces with second slitting unit
- max. operating safety by simple programming
- max. use of material as punching next to sheet edge (up to 2 mm) possible
- continuous slitting without witness marks (no back-hit necessary)
- increasing of productivity as no manual deburring is necessary
- useable for
 - aluminium up to s = 2,0 mm
 - steel up to s = 1,5 mm
 - stainless steel up to s = 1,2 mm



patented
EP 2,794,142

12/2011

TRUMPF

THICK TURRET

SALVAGNINI