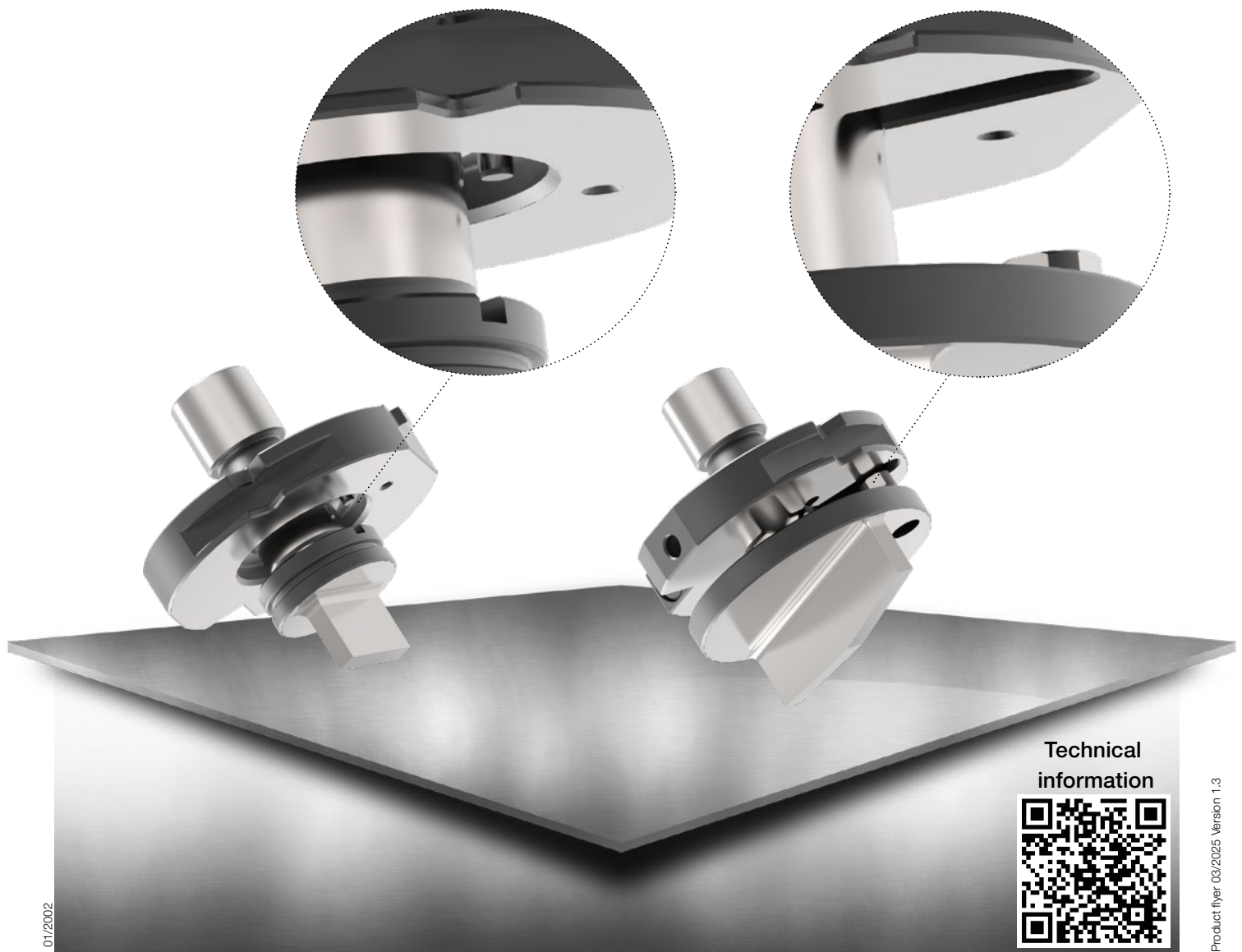


ps:[®]passfit

FOR MACHINE TYPE TRUMPF

- extremely fast and easy adjustment of the tools without additional tool
- high operational security of the machine preventing expensive tool misalignments
- extremely high tool stability (sheets up to 12,0 mm – also stainless steel – can be punched)
- no expensive base bodies are necessary
- all PASS special tools, e.g. embossing tools (louver, beads, bridges, lances, etc.) are manufactured and delivered with **ps:[®]passfit**



Technical information

