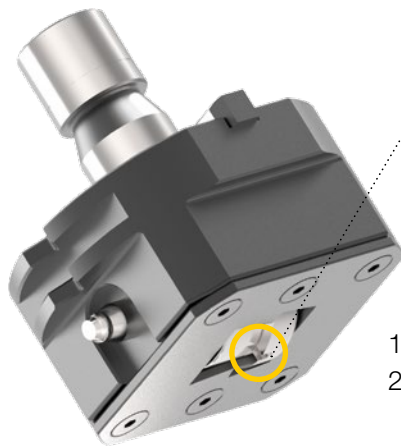


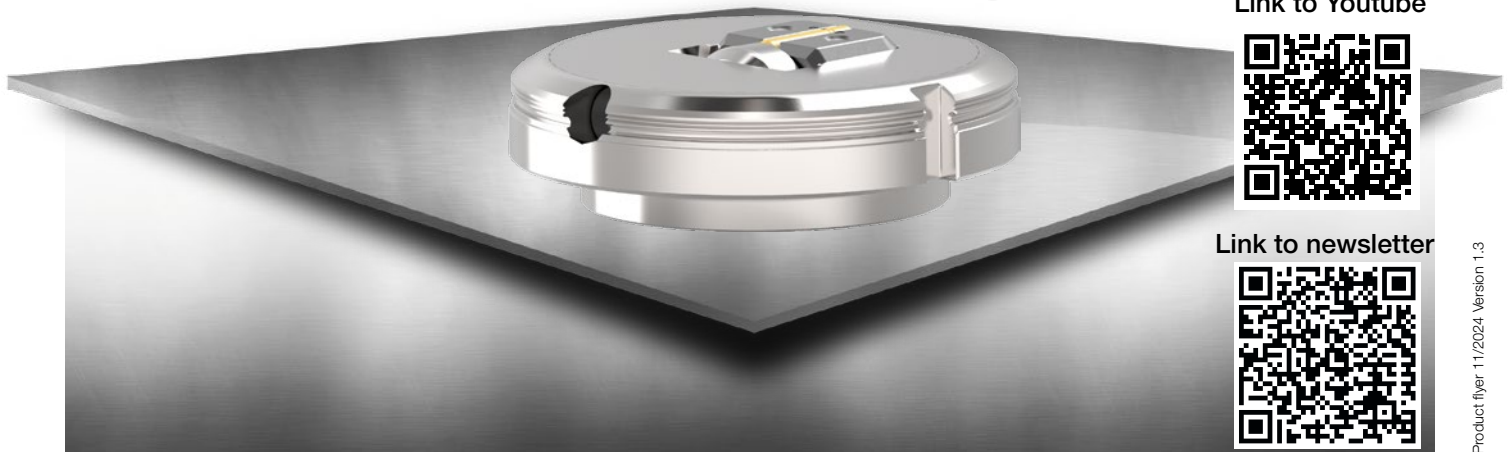
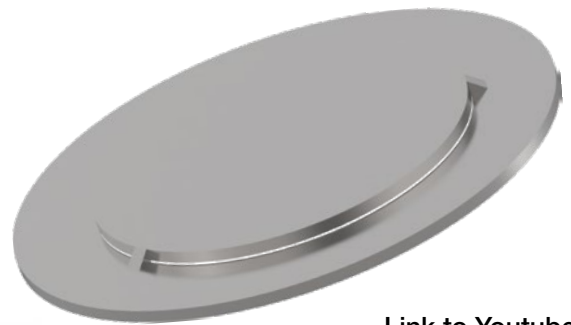
ps:[®]wheel-knock-out-sl

FOR MACHINE TYPE TRUMPF

- shape- and size-independent tool for flexible on-site knock-outs
- flexible diameters with only ONE tool (from d = 150,0 mm)
- individual design (min. radius r = 75,0 mm)
- long-lasting lifetime of the cutting wheels due to X3-PM design
- several connections possible
- time savings as no tool change is necessary
- cost savings, as only one tool is needed for different diameters
- for sheet thickness s = 0,8 up to 1,5 mm (stainless steel s = 0,8 up to 1,2 mm)
- easy programming - as a wheel tool
- for sheet materials aluminium, steel, stainless steel



1 relief per wheel = 80 mm distance
2 reliefs per wheel = 40 mm distance, etc.



Link to Youtube



Link to newsletter



TRUMPF

THICK TURRET

SALVAGNINI

Product flyer 11/2024 Version 1.3