

# ps:<sup>®</sup>engraving-up

FOR MACHINE TYPES TRUMPF AND THICK TURRET

The engraving process of material is always a consistent and interesting topic:

No matter if one design in an anodised sheet, one logo or only a simple identification mark has to be made. Typically and in common processes engravings are produced from above to below.

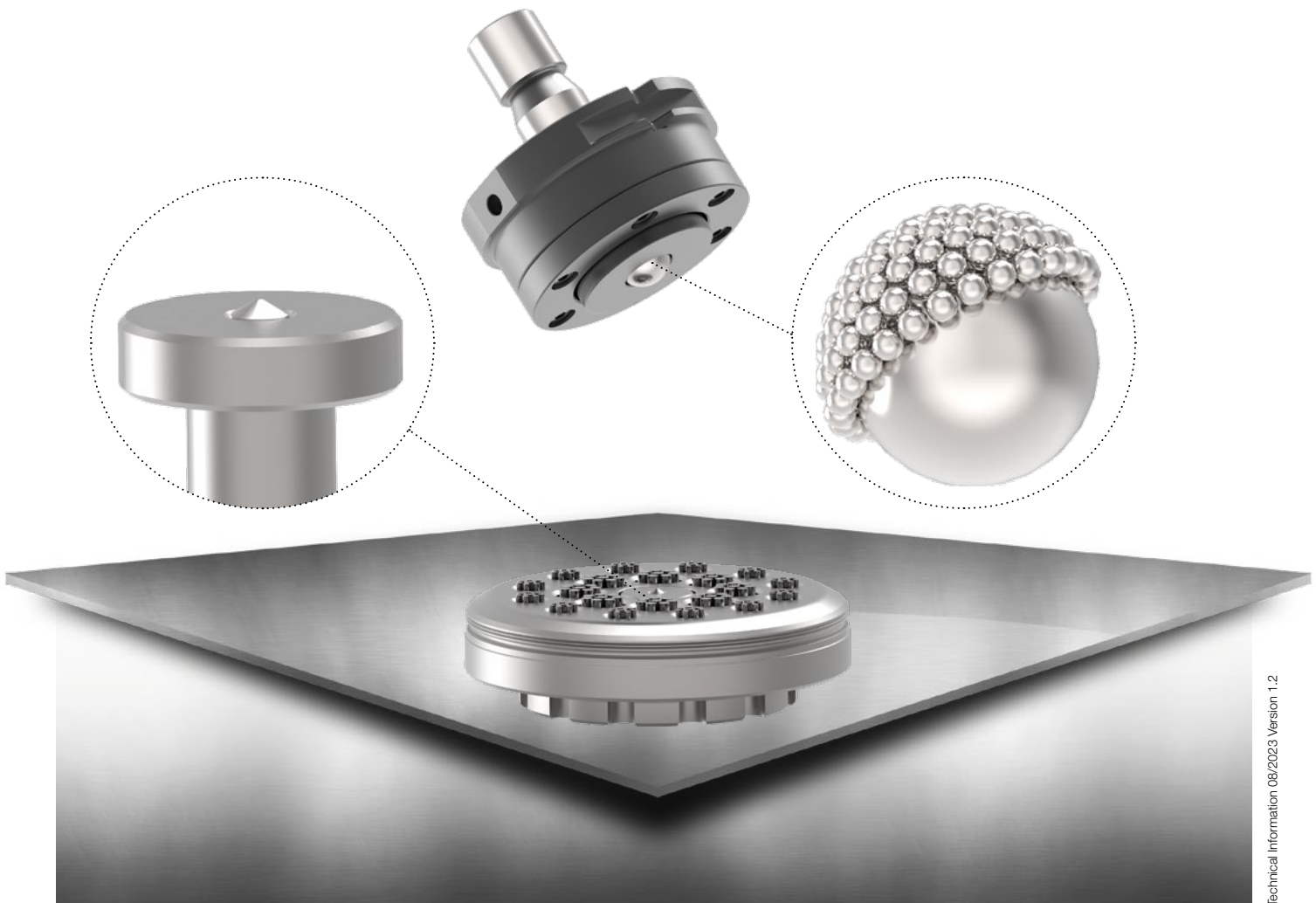
But sometimes it is very important and necessary that engravings are required to be made from below.

The **ps:<sup>®</sup>engraving-up** provides the possibility to process this engraving from below.

The interchangeable spring in the upper part of the tool provides a fine adjustment of the spring force and pass the specified pressure on the sheet by the ball (Ø 15). Thus, sheet distortions can be compensated.

Similar to our **ps:<sup>®</sup>ball-deburr**, the ball is integrated in a solid and hardened rack, the ball rack is polished and provides a trouble-free operation.

## Example image System TRUMPF



TRUMPF

THICK TURRET

SALVAGNINI

Technical Information 08/2023, Version 1.2

# ps:<sup>®</sup>engraving-up

FOR MACHINE TYPES TRUMPF AND THICK TURRET

In order to avoid sheet scratches the unique brush-rack in the lower part are taken to account and provides a secure protection of the sheet. With this design the high-quality diamond-needle can do the engraving process unobstructed.

The tool is available for tooling system THICK TURRET as well as TRUMPF and find the application also on machine without the „active die“ system. The tool is also usable for machine without rotation.

The **ps:<sup>®</sup>engraving-up** is applicable for all sheet materials as well as sheet thicknesses.

TRUMPF

THICK TURRET

SALVAGNINI

## ps:<sup>®</sup>engraving-up made by PASS

1. fully adjustable pre-loaded spring in the upper part for fine adjustment
2. interchangeable spring in the upper part for rough adjustment of the spring force for all sheet materials (aluminium / steel / stainless steel) and thicknesses
3. ball integrated in a solid and hardened rack
4. ball works free of clearance under pressure during process
5. ball rack is polished and provides a trouble-free procedure
6. low maintenance - long tool life
7. diamond needle insert for supreme tool life